

APPROX 8,306 SQUARE FEET RETAIL/OFFICE SPACE • 125' FRONTAGE IN PRIME WILLIAMSBURG



## 467 KEAP STREET

BETWEEN METROPOLITAN AVENUE AND AINSLIE STREET

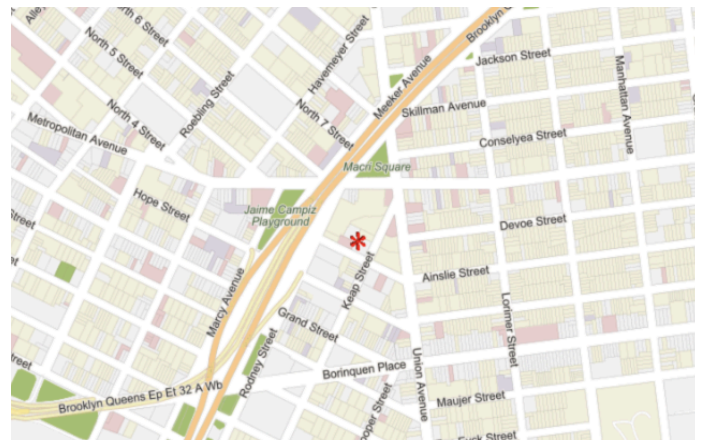
- 467 Keap Street is a **2009** development in **prime Williamsburg**, Brooklyn.
- The space is **8,306 square feet (approx)**.
- Two levels of retail/office space, divisible as follows:
  - First Floor \$15,000/month (4,153 SF)
  - Lower Level \$9,000/month (4,153 SF)
- **125' of frontage**. Great exposure on Keap Street at 40', and Ainslie Street at 85'.
- Located in a neighborhood packed with galleries, restaurants and schools. Guaranteed foot traffic.
- Floor-to-Ceiling Windows.
- 20' Ceiling Height.
- **Private Elevator** in space to the lower level
- The building is minutes away from many subway lines (G, J, L, M, Z), and is a perfect opportunity for all general uses: office, retail, gym, or medical.

### EXCLUSIVE BROKERS:

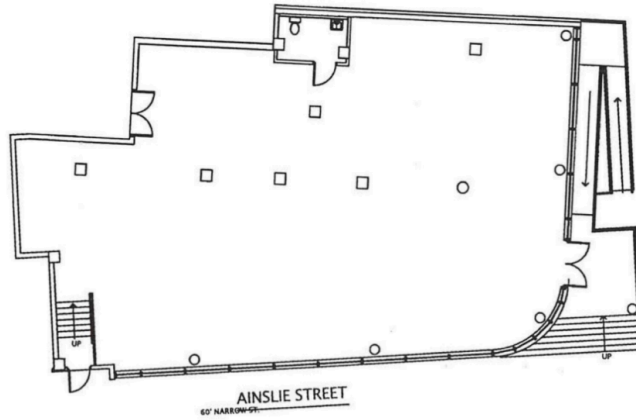
DANIEL BARCELOWSKY  
EVRG REALTY & INVESTMENTS  
PHONE : 646.373.7944  
E-MAIL : [DANIEL@EVRGREALTY.COM](mailto:DANIEL@EVRGREALTY.COM)

TZIPPORAH WEXLER  
GRAND SUCCESS REALTY  
PHONE: 212.353.9375  
EMAIL: [MODAHANI811@AOL.COM](mailto:MODAHANI811@AOL.COM)

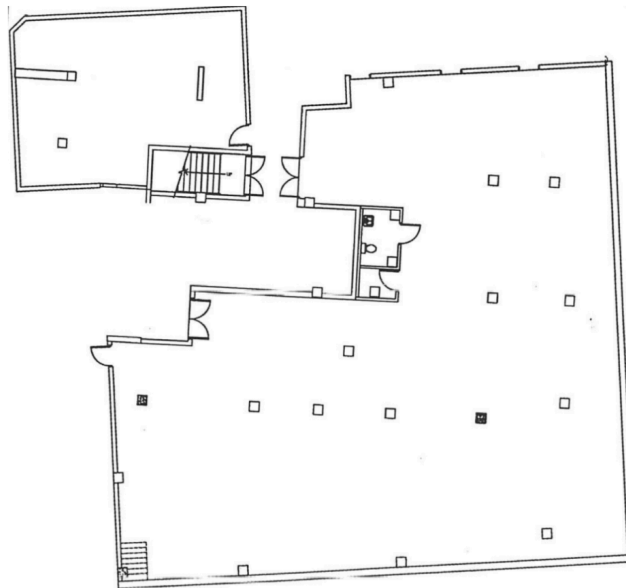
**\$19,995/MONTH**



FLOORPLANS



GROUND FLOOR



LOWER LEVEL

