

APPROX 9,588 SQUARE FEET RETAIL/OFFICE SPACE • 125' FRONTAGE IN PRIME WILLIAMSBURG



467 KEAP STREET

BETWEEN METROPOLITAN AVENUE AND AINSLIE STREET

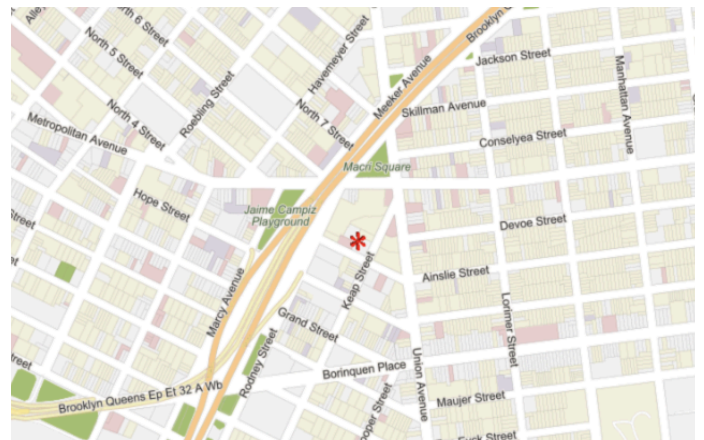
- 467 Keap Street is a **2009** development in **prime Williamsburg**, Brooklyn.
- The space is **9,588 square feet (approx)**.
- Two levels of retail/office space, divisible as follows:
 - First Floor \$15,000/month (4,153 SF)
 - Lower Level \$9,000/month (5,435 SF)
- **125' of frontage**. Great exposure on Keap Street at 40', and Ainslie Street at 85'.
- Located in a neighborhood packed with galleries, restaurants and schools. Guaranteed foot traffic.
- Floor-to-Ceiling Windows.
- 13' Ceiling Height.
- **Private Elevator** in space to the lower level
- The building is minutes away from many subway lines (G, J, L, M, Z), and is a perfect opportunity for all general uses: office, retail, gym, or medical.

EXCLUSIVE BROKERS:

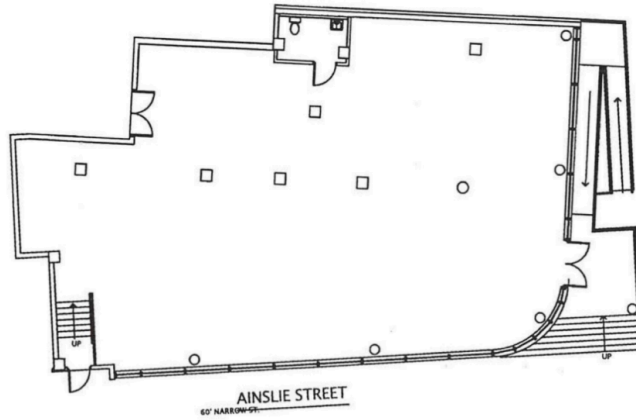
DANIEL BARCELOWSKY
EVRG REALTY & INVESTMENTS
PHONE : 646.373.7944
E-MAIL : DANIEL@EVRGREALTY.COM

TZIPPORAH WEXLER
GRAND SUCCESS REALTY
PHONE: 212.353.9375
EMAIL: MODAHANI811@AOL.COM

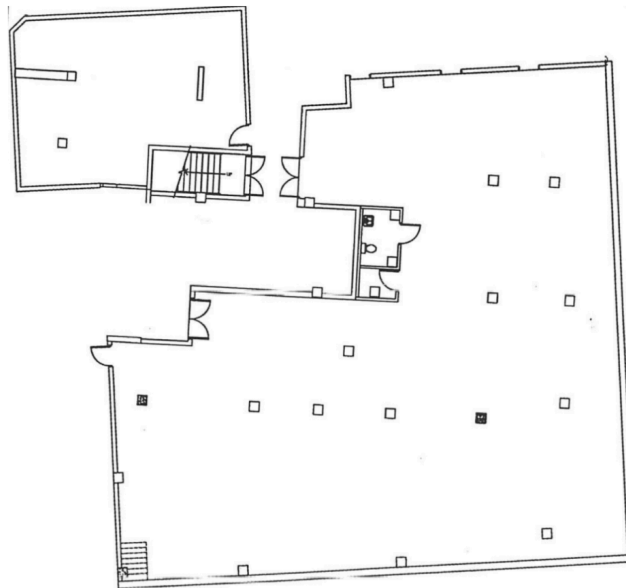
\$19,995/MONTH



FLOORPLANS



GROUND FLOOR



LOWER LEVEL

