



## 109 RALPH AVENUE

LOCATED BETWEEN JEFFERSON AVENUE AND HANCOCK STREET

- 1,400 SF corner retail
- Located in prime Bedford Stuyvesant
- Ideal corner space for maximum exposure
- Corner of Ralph and Jefferson Avenues
- Heavy foot traffic on busy Ralph Avenue
- Divisible options available
- Full basement included
- Significant signage opportunity
- 20 Ft of frontage
- Open layout
- High ceilings
- Private bathroom
- Steps to J, Z, A, and C trains
- Close to Q 24, B 26, and B47 bus lines
- All uses considered
- Perfect for medical office, art studio
- Available Immediately

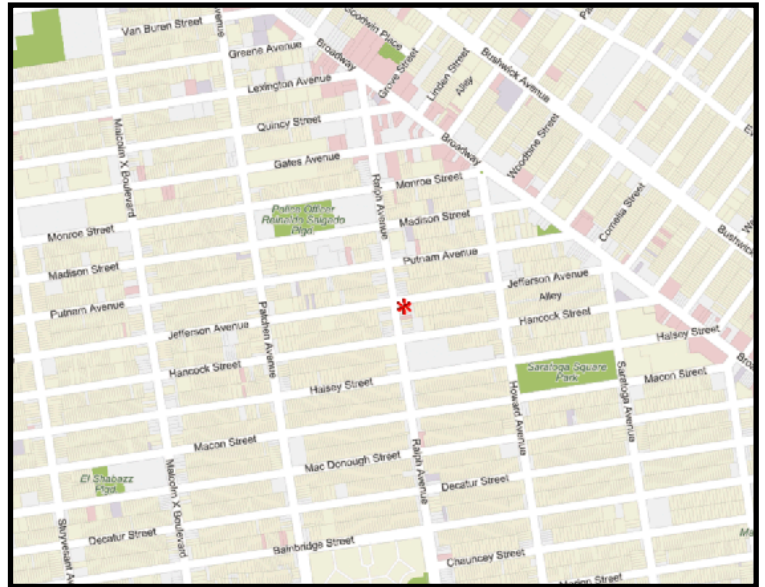
LICENSED BROKER & PRINCIPAL, DANIEL BARCELOWSKY

PHONE : 646.373.7944 / E-MAIL : [DANIEL@EVRGREALTY.COM](mailto:DANIEL@EVRGREALTY.COM)

LICENSED SALESPERSON, STEVE DAVID

PHONE : 347.578.1450 / E-MAIL : [STEVE@EVRGREALTY.COM](mailto:STEVE@EVRGREALTY.COM)

**\$3,999/MONTH**



**1,400 SF CORNER RETAIL IN PRIME BEDSTUY**





